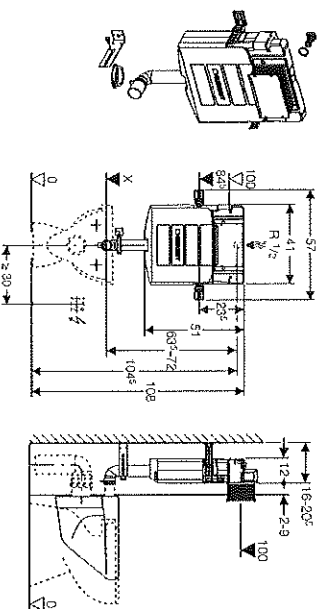


Geberit concealed cisterns

Geberit concealed cisterns

Geberit concealed cisterns

Geberit Sigma concealed cistern 12 cm, H108



Application

- For concealed installation
- For back to wall floor-standing WCs

Characteristics

- Concealed cistern fully insulated against condensation
- Front actuation only
- Protection cover for service opening can be mounted without tools and cut to length
- Dual flush with Sigma80 touchless, Sigma60, Sigma50, Sigma20, Sigma10 touchless, Sigma01 or Bolero flush plates
- Dual flush with pneumatic buttons
- Single flush with Sigma10 or Tango flush plates
- Single flush with touchless flush or pneumatic buttons
- Water supply connection at centre back or at the top
- Flush bend has maximum 8 cm adjustment. Flush can be cut down by maximum of 8 cm
- Installation height 1080 mm (can be cut down, depending on the WC pan performance)
- Minimum install height 950 mm
- Fastening bracket adjustable in depth
- Cistern can be reversed to give access from behind in a duct situation when flushed with pneumatic buttons or touchless flush
- Flush valve features 6 l and 4.5 l flush settings to enable either a 6 l and 3 l flush or a 4.5 l and 3 l flush. Note: must be used with pans designed for low volume flush.
- The cistern can be operated with used water (rainwater) provided it is passed through a filter system first

Product Details

Flow pressure range	0.1–10 bar
Operating temperature water max.	25 °C
Flush volume small range	2.6–4 l
Flush volume factory setting	5.8 and 3 l

Scope of Delivery

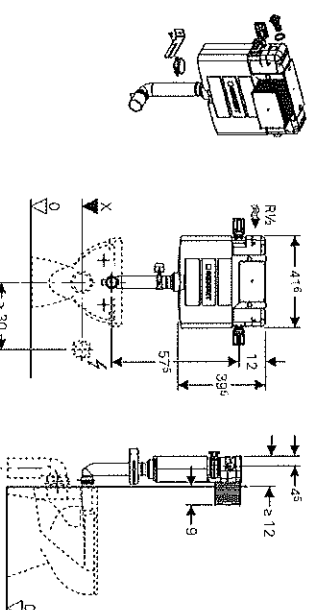
Water supply connection R 1/2" male BSP parallel thread with integrated angle stop valve; Protection housing for service opening; Flush pipe ø 45 mm; Fastening for flush bend; Protection plug for flush pipe; 2 slotted flat irons; 2 fastening brackets; pre-mounted; Fastening material

Excluded: Flush plate

Ordering Information

Article no.	PU1	PU4
109.309.00.5	1	24

Geberit Omega concealed cistern 12 cm, H108



Application

- For concealed installation
- For back to wall floor-standing WCs

Characteristics

- Installation depth adjustable 12–15 cm
- Fully insulated against condensation
- Water supply connection left
- Protection housing for service opening, can be cut to length
- Dual flush with Omega flush plates
- Dual flush with pneumatic buttons
- Single flush with pneumatic buttons
- Connection hose to angle stop valve can be screw-connected by hand
- Fast adjustment of the actuator rods for flush plate
- Minimum installation height 980 mm
- Flush valve features 6 l and 4.5 l flush settings to enable either a 6 l and 3 l flush or a 4.5 l and 3 l flush. Note: must be used with pans designed for low volume flush.
- The cistern can be operated with used water (rainwater) provided it is passed through a filter system first.
- Front actuation
- Installation height 1080 mm

Product Details

Flow pressure range	0.1–10 bar
Operating temperature water max.	25 °C
Flush volume factory setting	5.8 and 3 l
Flush volume small range	2.6–4 l

Scope of Delivery

Water supply connection, R 1/2", compatible with MaplaFix, with integrated angle stop valve and hand wheel; Flush bend extension ø 45 mm; Protection housing for service opening; Fastening for flush bend; Protection plug for flush bend; 2 fastening brackets; Fastening material

Ordering Information

Article no.	PU4
109.061.00.1	24

Preferential discount terms on the Geberit Omega range are available to those who display the product. Please contact your local Area Sales Manager for further information.