

# stuart

## PH TS Stainless Steel Pumps

The pump body assembly and impeller are manufactured from cast 316 stainless steel with all other fluid exposed components being made of stainless steel or other non ferrous materials.

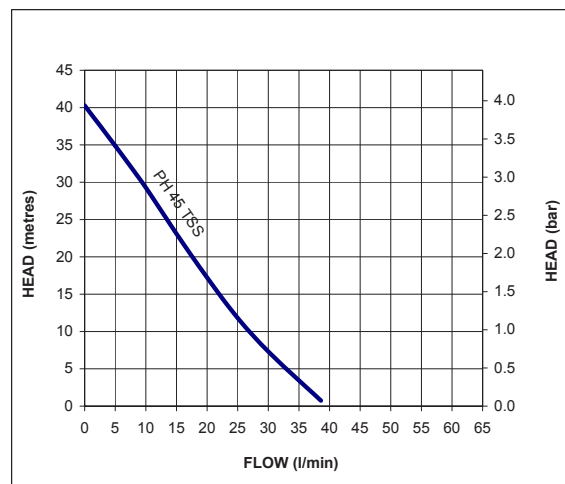


### Features

- Stainless steel components
- Priming vent plug
- Continuous (S1) duty rating
- Seal material options
- 50 Hz and 60 Hz options
- IPX4 enclosure protection
- G  $\frac{3}{4}$  inlet and outlet connections

### Application

- Designed for continuous use, the stainless steel peripheral range is ideal for handling non-abrasive liquids and is developed specifically for beer, lager or cider dispense
- Also used for pumping demineralised water

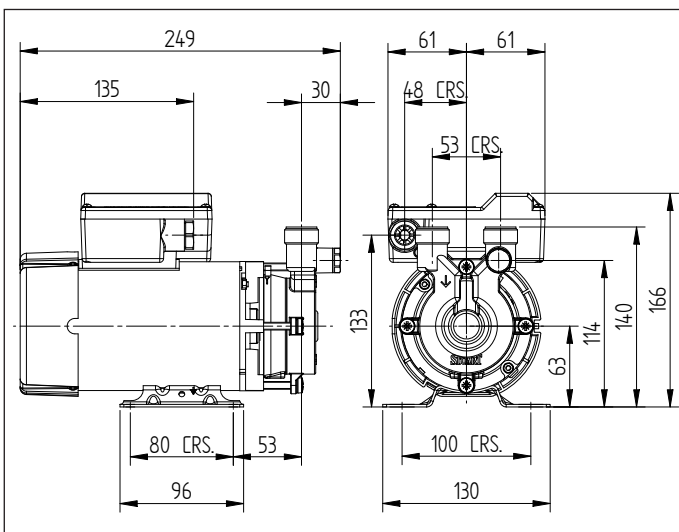


For further advice on selecting the correct pump call or e-mail [info@stpumps.co.uk](mailto:info@stpumps.co.uk)

**pumpassist**  
HELPLINE +44 (0) 844 98 000 97

# stuart

| Pump Model  |                                  | PH 45 TS S<br>46628                   | PH 45 TS S<br>46629                 | PH 45 TS S<br>46632                    |
|-------------|----------------------------------|---------------------------------------|-------------------------------------|--|
| General     | Guarantee                        | 1 year                                |                                     |  |
| Features    | Pump type                        | Peripheral                            |                                     |  |
|             | Mechanical seal                  | Nitrile / Carbon /<br>Silicon Carbide | Viton / Carbon /<br>Silicon Carbide | Nitrile / Carbon /<br>Silicon Carbide  |
|             | Priming vent plug                | ✓                                     | ✓                                   | ✓                                      |
| Performance | Maximum head (closed valve)      | 40 metres                             |                                     | 40 metres @ 50 Hz<br>37 metres @ 60 Hz |
|             | Performance @ 10 l/min           | 29.5 metres                           |                                     |  |
|             | Performance @ 25 l/min           | 12 metres                             |                                     |  |
|             | Maximum flow                     | 38 l/min                              |                                     |  |
|             | Minimum static inlet pressure    | 0.1 bar (1 metre)                     |                                     |  |
|             | Maximum static inlet pressure    | 2.1 bar (21 metres)                   |                                     |  |
|             | Maximum viscosity                | 50 secs redwood no. 1 9.5 centistokes |                                     |  |
|             | Maximum working pressure*        | 600 kPa (6 bar)                       |                                     |  |
|             | Maximum ambient air temperature  | 40 °C                                 |                                     |  |
|             | Min / Max water temperature      | Min 4 °C / Max 80 °C                  |                                     |  |
|             | Suction lift**                   | 4.6 metres                            |                                     |  |
| Connections | Pump connections                 | G ¾ male                              |                                     |  |
| Motor       | Type                             | Induction, auto-reset thermal trip    |                                     |  |
|             | Duty rating                      | Continuous (S1) @ 2.5 l/min and above |                                     |  |
| Electrical  | Power supply / phase / frequency | 230 V a.c. / 1 / 50 Hz                |                                     | 230 V a.c. / 1 / 50 /<br>60 Hz         |
|             | Current (full load)              | 2.4 Amps                              |                                     | 2.0 Amps @ 50 Hz<br>2.5 Amps @ 60 Hz   |
|             | Power consumption                | 518 Watts @ 50 Hz                     |                                     | 410 Watts @ 50 Hz<br>570 Watts @ 60 Hz |
|             | Fuse rating                      | 5 Amps                                |                                     |  |
|             | Power cable (pre-wired)          | 1.5 metres                            |                                     |  |
| Physical    | Enclosure protection             | IPX4                                  |                                     |  |
|             | Length                           | 249 mm                                |                                     |  |
|             | Width                            | 130 mm                                |                                     |  |
|             | Height (excluding hoses)         | 166 mm                                |                                     |  |
|             | Weight (including fittings)      | 6.3 Kg                                |                                     |  |



\* The maximum pressure that can be applied to the pump under any installation conditions.

\*\* With footvalve fitted.

Stuart Turner Limited reserves the right to amend specifications without notice.