

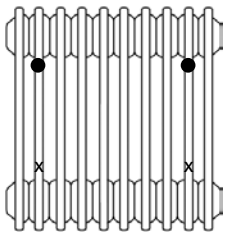
MULTI COLUMN Fitting Instructions

Steel Multi Column Radiator, Horizontal and Vertical

Please read these instructions and terms and conditions carefully prior to installation. Failure to do so may invalidate the warranty.

Drawings

1 - Bracket Positions

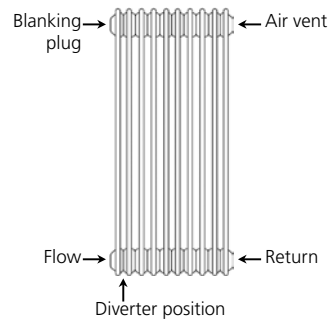


Wall Ties should be logically positioned to prevent Steel Multi Column from falling away from the wall, usually in line with Wall Brackets. If more than 2 brackets have been supplied these should be spaced evenly.

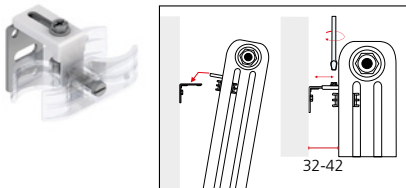
x = typical Wall Bracket positions

• = typical Wall Tie positions

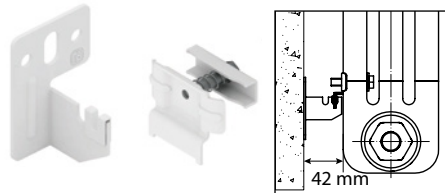
2 - Multi Column Orientation



3 - Wall Tie Assembly

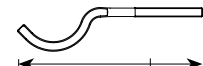


4 - Standard Wall Brackets



5 - Wall Brackets (Solid Walls)

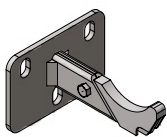
See drawing for bracket positioning.



Bracket lengths

- 2 Column = 173mm
- 3 Column = 192mm
- 4 Column = 211mm
- 5 Column = 230mm
- 6 Column = 249mm

6 - Stud Wall Brackets

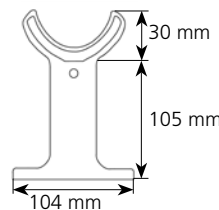


Pipe centres from wall:

- 2-3 column = 70 - 80 mm
- 4-5 column = 95 - 130 mm
- 6 column = 129 - 148 mm

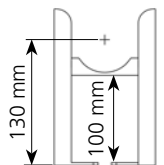
7 - Floor Mount

If ordered position evenly between sections beneath the radiator.



8 - Slip on Feet

If ordered slip on desired sections evenly beneath radiator.



Pipe Centres

Pipe centres left to right = width of radiator plus valves

Pipe centres from wall =

Mounting Option	2 Column	3 Column	4 Column	5 Column	6 Column
Standard Wall Brackets	64 - 74 mm	82 - 92 mm	102 - 112 mm	120 - 130 mm	140 - 150 mm
Stud Wall Brackets	70 - 80 mm		95 - 130 mm		129 - 148 mm
Solid Wall Brackets	64 - 74 mm	82 - 92 mm	102 - 112 mm	120 - 130 mm	140 - 150 mm
Floor Mounts	64 - 74 mm	82 - 92 mm	102 - 112 mm	120 - 130 mm	140 - 150 mm
Slip on Feet	64 - 74 mm	82 - 92 mm	102 - 112 mm	120 - 130 mm	140 - 150 mm

1. Unpack & Inspect

This product should have reached you in perfect condition. Please carefully unpack and inspect this radiator and all fittings. Your point of purchase must be notified of any shortages or damage within 28 days of delivery.

2. Contents

You should have:

- 1 Radiator - 1 manual airvent - 1 blank plug
- 1 Plain cover plug - 1 Bleed key

Your chosen mounting option out of the following;

- 2 Floor Mounts & 2 Wall Ties (up to 20 sections)
- 3 Floor Mounts & 3 Wall Ties (21-30 sections)
- 4 Floor Mounts & 4 Wall Ties (31-40 sections)
- 2 Slip on Feet & 2 Wall Ties (up to 20 sections)
- 3 Slip on Feet & 3 Wall Ties (21-30 sections)
- 4 Slip on Feet & 4 Wall Ties (31-40 sections)
- 4 Stud wall brackets (up to 20 sections)
- 6 Stud wall brackets (21-30 sections)
- 8 Stud wall brackets (31-40 sections)

For Wall brackets see table below

Number of sections that a PAIR of STANDARD WALL BRACKETS is able to hold up (solid wall).

Height	*SMC 2	*SMC 3	*SMC 4	*SMC 5	*SMC 6
200	50	50	50	50	50
300	50	50	50	48	40
400	50	50	49	38	32
500	50	50	41	32	27
555	50	48	40	30	25
600	50	47	35	27	23
655	50	44	32	25	21
750	50	39	29	22	19
900	48	33	24	19	16
1000	43	30	22	17	14
1200	35	24	18	14	12
1500	29	19	14	11	9
1658	27	18	13	10	8
1800	24	16	12	9	8
2000	22	15	11	9	7
2200	20	13	10	8	6
2500	18	12	9	7	6

*SMC = Steel Multicolumn

You have to add **No. 2 of wall ties** for every kind of radiator

- 2 Solid Wall Brackets & 2 Wall Ties (up to 20 sections)
- 4 Solid Wall Brackets & 4 Wall Ties (21-40 sections)

You will need:

- Tape measure
- Spirit level
- Electric drill and bits
- Suitable screws and plugs

3. Orientation

Steel Multi Column radiators have specific left and right hand threaded bushes and these can be easily damaged if forced or incorrectly fitted (this will inevitably cause leaks).

If your radiator is delivered as a complete unit (up to 40 sections) it will be supplied with four factory fitted bushes. At the top should be the blanking plug and the ½" air vent bush. At the bottom are two ½" bushes for flow and return connections. A diverter is fitted within the first two sections in the lower water way directly below the blanking plug end.

The flow must be connected to this side (please see diagram overleaf).

Any radiator that requires joining will be supplied with a set of 4 bushes which will require fitting into the positions described above. Bushes require a dry fit connection only; **you must not** use any Compound materials (e.g. Jet Blue) or Plumbers Hemp.

If you choose you may use up to 4 turns of PTFE tape to help seal the threads (the tape should be applied in the direction of the thread and no more than this amount should be used as this may cause leaks to occur) The bushes with a left hand thread are identified with a red sticker with the letter L.

If looking directly at the front of the radiator, the two bushes with an 'L' sticker on them are positioned on the left and turned anti-clockwise. The two bushes cast with no stickers are positioned on the right and turned clockwise. It is best to leave the sticker on the bushes until you have fitted the radiator and are ready to install the valves and air vents.

4. Mark Bracket Positions

Wall brackets are typically positioned two or three sections in from either end (please see drawing 1 on other page). Standard Wall brackets are typically positioned at the bottom of the radiator two or three sections in from either end (please see drawing 1 on other page).

The Radiator should sit on solid wall brackets if used, this makes them less visible when fitted. The standard wall bracket is a clamp style with a separate mounting plate that is fixed to the wall. When securing the brackets to the radiator wrap masking tape around your screwdriver to reduce the risk of damaging the paint finish. Fit the wall brackets and wall ties on to the back of the radiator two sections in from each end.

PLEASE NOTE: It is essential that all brackets are level to ensure a vertical alignment for connecting the pipework.

5. Fix Wall Brackets / Feet

For standard wall brackets fix the clamp bracket and the complete wall tie to the radiator and mark their positions on the wall. Drill holes and fix the wall plates for the bracket ensuring they are all level. Hang the radiator clamp brackets onto the wall plates, then using a long screwdriver secure the wall ties to the wall. If using solid wall brackets use a rubber mallet to insert the brackets to prevent damaging the paint finish. For slip on feet and floor mounts fix the wall ties in place on the top of the radiator and place the radiator in situ, mark the wall ties position, fix the wall plates, then position the radiator and secure the wall ties to the wall plates.

PLEASE NOTE: It is essential that all brackets are level to ensure a vertical alignment for connecting the pipework.

6. Hang & Commission

With all bracket positions marked and / or fixed, the radiator is placed in its final position for valve and pipe work connections. Please ensure the flow is connected to the correct end nearest the diverter (please see Drawing 2 on other page). When commissioning your radiator on an indirect/closed system we recommend using a suitable quality & quantity of mixed metal inhibitor to protect against scale & corrosion.

Damage caused to systems not protected by a suitable inhibitor will not be covered by manufacturer's guarantee.

Technical Specifications

Materials	Mild Steel.
Connections	½" flow and return.
Test pressure	13 Bar
Testing authority	EN442
Maximum operating pressure	8 Bar
Maximum working temperature	95°C
Packaging	Wrapped in polyethylene with cardboard protectors.

PLEASE NOTE: Systems using micro bore pipework must have adequate pressure and flow rates for the number and style of radiators on the system.

Guarantees & Liabilities

This product is guaranteed for 10 years. The guarantees in all cases are subject to the products being installed in accordance with British and or European standards as well as these fitting instructions. The guarantees in all cases are restricted to the free of charge replacement or repair of the failed product only. Our liability will under no circumstances extend beyond the repair or replacement of the product supplied by us. Claims for either labour in replacement or damage to property are not admissible. Any goods that are returned, in the event of a problem, will belong to us.

Terms & Conditions

All products must be inspected once removed from the packaging and your point of purchase notified within 28 days of delivery of any scratches, blemishes or other damage. Your point of purchase will then agree appropriate action.

Imperfect radiators should therefore not be fitted and your point of purchase will not accept responsibility for replacement of scratched or damaged radiators once they have been fitted. This includes any consequential loss or cost of fitting.

If your point of purchase are not notified within 28 days of the date on the signed delivery note then it will be deemed that they have fully complied with their obligations and claims will not be considered.

Failure to comply with any of the above may invalidate any claims. Your point of purchase recommend that after you check the product on delivery that it is stored in its packaging to prevent damage prior to installation, they cannot accept responsibility for items damaged after delivery.