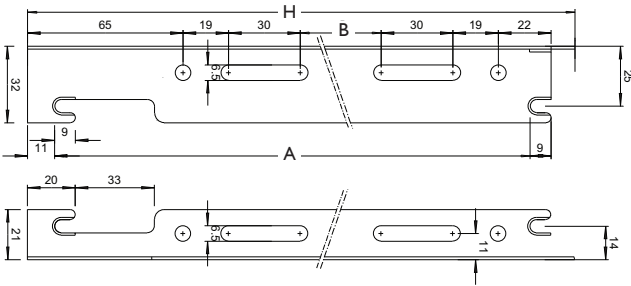


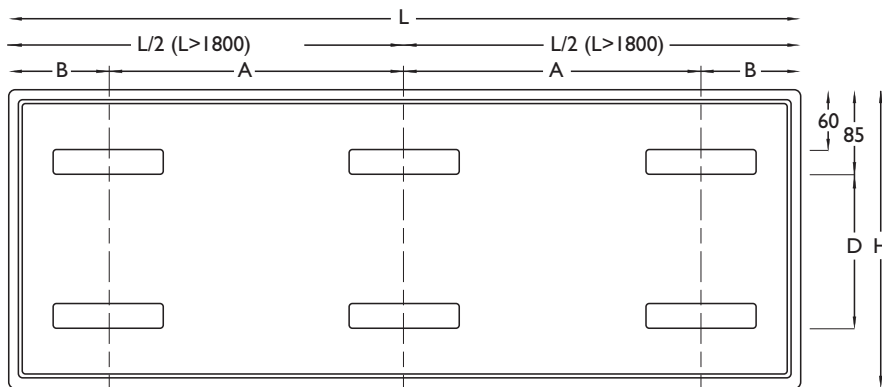
**Concealed Wall Brackets 200, 300, 400, 500, 600, 700, 900mm**



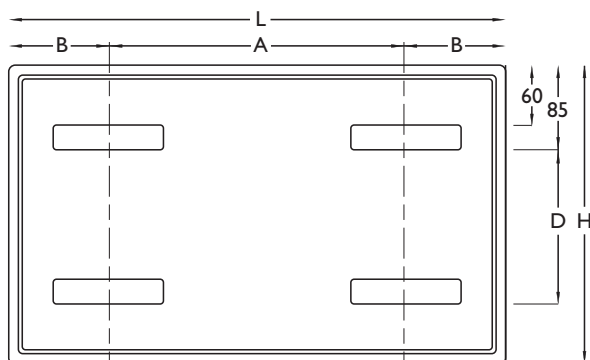
Height	H	A	B
300	185	155	-
400	285	255	90
500	385	355	190
600	485	455	290
700	585	555	390
900	785	755	590

Δ Factors in C Other Than Δ T50					
<b>5C</b>	0.093	<b>30C</b>	0.506	<b>55C</b>	1.135
<b>10C</b>	0.120	<b>35C</b>	0.622	<b>60C</b>	1.275
<b>15C</b>	0.201	<b>40C</b>	0.743	<b>65C</b>	1.419
<b>20C</b>	0.295	<b>45C</b>	0.869	<b>70C</b>	1.566
<b>25C</b>	0.397	<b>50C</b>	1.000	<b>75C</b>	1.717

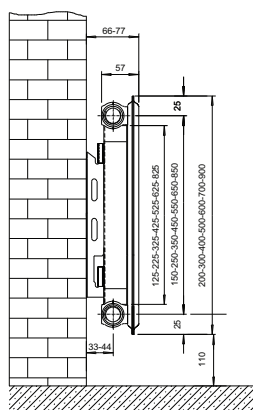
ΔT50: Based on mean water temperature of 70C (75C inlet, 65C outlet, 20C room)



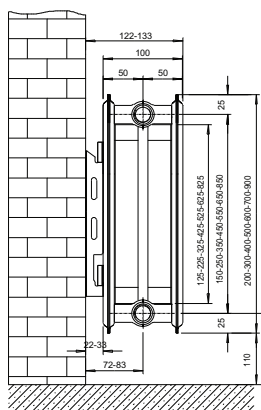
Radiator Length L (mm)	DF-HF-TS		SF		Rows of Bracket Lugs
	A (mm)	B (mm)	A (mm)	B (mm)	
400	200	100	170	115	2
500	300	100	270	115	2
600	400	100	370	115	2
700	500	100	470	115	2
800	600	100	570	115	2
900	700	100	670	115	2
1000	800	100	770	115	2
1100	900	100	870	115	2
1200	1000	100	970	115	2
1300	1100	100	1070	115	2
1400	1200	100	1170	115	2
1600	1400	100	1370	115	2
1800	800	100	785	115	3
2000	900	100	885	115	3
2200	1000	100	985	115	3
2400	1100	100	1085	115	3
2700	1250	100	1235	115	3
3000	1400	100	1385	115	3



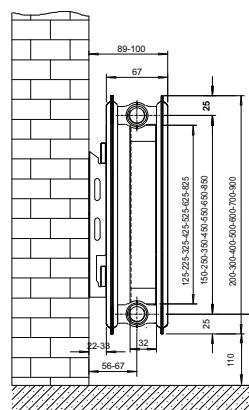
H (mm)	D (mm)	WATER CONTENT AND WEIGHT PER METER LENGTH:						
		Single - SF		Single Plus - HF		Triple - TS		
		Length	Single - SF	Single Plus - HF	Double - DF	Triple - TS		
		Inch	Litre	Kg	Litre	Kg	Litre	Kg
200	55	7.8	2.00		2.72	12.22	4.00	18.62
300	115	11.8	3.00	8.11	3.39	15.60	5.10	23.30
400	255	15.7	4.00	11.23	4.29	21.74	6.36	32.55
500	355	19.7	5.00	13.73	5.19	26.62	7.62	39.83
600	455	23.6	6.00	16.85	5.79	32.76	8.91	49.09
700	555	27.6	7.00	18.82	6.61	36.50	10.17	54.70
900	755	35.4	9.00	24.13	7.65	41.18	12.00	90.93



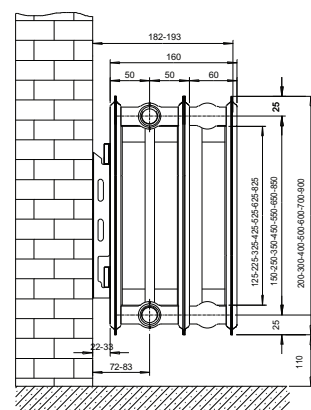
**SF SINGLE PANEL SINGLE CONVECTOR**



**DF DOUBLE PANEL DOUBLE CONVECTOR**



**HF DOUBLE PANEL SINGLE CONVECTOR**



**TS TRIPLE PANEL TRIPLE CONVECTOR**